

# Delaware SOYBEAN BOARD

## 2023 YEAR IN REVIEW

**DELAWARE FARMERS PLANT ABOUT 160,000 ACRES OF SOYBEANS ANNUALLY, PRODUCING OVER SEVEN MILLION BUSHEL OF BEANS AND GENERATING APPROXIMATELY \$60 MILLION IN VALUE TO THE STATE.**

The Delaware Soybean Board consists of nine farmer-directors and the Secretary of Agriculture. Funded through a one-half of one percent assessment on the net market value of soybeans at their first point of sale, the checkoff works with partners in the value chain to identify and capture opportunities that increase farmer profit potential.

### PRODUCTION RESEARCH

The Delaware Soybean Board funded six projects totaling \$57,361, to address strategic needs of Delaware soybean farmers:

**Identifying and culturing slug parasitic nematodes in Delaware**

*Dr. Michael Crossley, \$7,884*

**Soil pH and planting timing effects on yield**

*Jarrold O. Miller Amy L. Shober, University of Delaware, \$6,356*

**Irrigation and starter potassium effects on uptake and yield**

*Jarrold O. Miller, James Adkins, and Cory Whaley, University of Delaware, \$5,556*

**Soybean Row Spacing and Planting Rate Effects on Litter Decomposition**

*Jarrold O. Miller, \$7,743*

**Evaluating Common Preemergence Herbicides for Relative Crop Safety**

*Mark VanGessel, University of Delaware, \$16,812*

**Case study testing effectiveness of deer repellents under extreme deer grazing**

*Luke Macaulay, University of Maryland, \$13,010*

Results of these projects are available at [soybeanresearchinfo.com](http://soybeanresearchinfo.com)

FIND & FOLLOW US

[desoybeans.org](http://desoybeans.org)



### YIELD CONTEST

#### *Delaware Farmers Break Records in Yield Contest*

The Delaware Soybean Board recognized two farmers who achieved new record soybean yields at the 2023 Delaware Ag Week in Harrington. **Dylan Tull** of Sussex County (pictured at right with DSB Chair Cory Atkins) achieved the new state-wide record of 96.99 bushels per acre with full season soybeans planted April 29 using Stine 39EC20. **Kevin Evans** closely followed with another record-breaking yield of 96.33 bu/ac, also full season Stine 39EC20, earning him the title of Sussex County winner in the Full Season division. The previous record of 96.04 bu/ac was held by R.C. Willin of Sussex County.



Other state winners recognized were **Mel Wyatt**, achieving a yield of 75.93 bu/ac with Pioneer P36A83 variety planted following rye on June 24 in the Double Crop division, and **Dale Blessing** reaching 80.33 bu/ac in the non-irrigated division planted June 3 using Hubner 4228.

Additional county winners were **Phillip Sylvester** of Kent County in the Full Season division, with a yield of 90.47 bu/ac planting Hubner 4228, **Mel Wyatt Jr.** of Kent County in the Double Crop division, reaching 71.21 bu/ac using Pioneer P36A83, **Robbie Emerson** of New Castle County in the Double Crop division, achieving 73.55 with Pioneer P37T51, and **Fred West III** of Sussex County in the Double Crop Division, growing 67.75 bu/ac using 48A94. No entries were received in the Full Season division from New Castle County.

"The 2022 growing season marked the 10th anniversary of the Delaware Soybean Yield Contest," remarked Cory Atkins, Delaware Soybean Board Chair. "Over the years, Delaware soybean growers have proven that bin-busting yields are possible in the First State, and have provided data for their fellow farmers to improve production methods."

The Contest, established in 2012, aims to assist in discovering varieties and management choices that work for soybean growers in Delaware. The goal of the Delaware Soybean Yield Contest is to gather data on practices incorporated in producing high soybean yields while recognizing the individuals who have achieved such yields. To date, the contest has received over 160 entries and continues to grow each year, with farmers showcasing their ability to achieve high-yields in both full season and double-cropped soybeans on irrigated and non-irrigated acres. Full contest information and results summary can be found on the DSB website at [www.desoybeans.org/yield-contest](http://www.desoybeans.org/yield-contest).



## PROMOTING SAFETY

### ***Delaware Soybean Board Partners to Improve Farm***

"On-farm safety is top-of-mind for the farmer-leaders of the Delaware Soybean Board," states Delaware Soybean Board (DSB) Chair Cory Atkins. This motivated DSB to fund a partnership with Nationwide to prepare local first-responders for potential grain entrapments by providing life-saving equipment and training.

According to the National Education Center for Agricultural Safety (NECAS), over half of people who get trapped in a grain bin do not come out alive. In their second year of this partnership, DSB hopes that its investment will reduce this statistic and protect Delaware's farming community.



***"A farm accident can happen in the blink of an eye. It's important to be proactive to prevent them from happening and be prepared for if they do."***

**- DSB CHAIR, CORY ATKINS**

This year's recipients were the Delmar Volunteer Fire Department and the Milton Fire Department. DSB Directors selected these locations after surveying where other rescue equipment is currently and determining areas of greatest need. Funding provided by soy-checkoff awarded a rescue tube and auger, along with training from NECAS on how to respond to an entrapment and use the tools.

During National Farm Safety and Health Week, observed September 17-23, 2023, DSB reminded soybean growers of the resources available through NECAS to improve safety on their farms. "A farm accident can happen in the blink of an eye," explains Cory. "It's important to be proactive to prevent them from happening and be prepared for if they do." Learn more by visiting [www.necasag.org](http://www.necasag.org).



## EXPANDING MARKETS

### ***Promoting Soy to International Buyers***

Directors from the Delaware Soybean Board hosted soybean buyers and users from Northern Europe on their farms in August (pictured above at Emerson Farm) to promote U.S. soy, as part of the U.S. Soybean Export Council (USSEC) Soy Connex summit. In its second year, Soy Connex hosted more than 700 participants, including international customers from 58 countries together with U.S. Soy farmers, related food and agriculture industry professionals, commodity exporters and others to discuss today's global economy and the need for collaborative efforts among those who grow, sell and choose U.S. Soy.

"Building relationships with international buyers and users upholds a strong soybean market in the Mid-Atlantic region," states Delaware Soybean Board Chair Cory Atkins of Cory's Produce. "While a majority of soybeans grown on the Delmarva are utilized locally, the demand for exports supports builds value for our beans."

Soybean buyers and users from Belgium, Germany, Ireland, Poland, and the United Kingdom had the opportunity to visit diverse operations in the First State, including Emerson Farms in Middletown, DE and Cory's Produce in Laurel, DE. During these visits, the group discussed the region's animal agriculture markets, soybean production and utilization, sustainability, urban encroachment, and more. During their trip, they enjoyed trying local treats as well, including Delaware-churned ice cream and blue crabs.



## PRIORITIES

### ***Consumer Education***

Through the Delaware State Fair, social media, and media campaigns, connections were made with consumers to improve trust in food and farming. The Delaware Soybean Board supported the 100th anniversary celebration of the chicken community on the Delmarva, buttressing favorable public perception and understanding of the chicken industry, which annually purchases more than 35 million bushels of soybeans.

The Delaware Soybean Board (pictured above) embarked on new efforts to improve rural road safety and raise awareness of slow-moving vehicles, including farm equipment, on public roadways.

### ***Animal Agriculture***

As the animal industry is the largest market for local soybeans, the Delaware Soybean Board identifies it as a priority to promote animal agriculture. The checkoff program supported groups such as the Delaware Pork Producers Association to support youth livestock shows, and participated with the Delmarva Land and Litter Collaborative to identify solutions that support both healthy and productive ecosystems and farming and poultry on Delmarva.

## PRIORITIES CONTINUED

### Emerging Markets

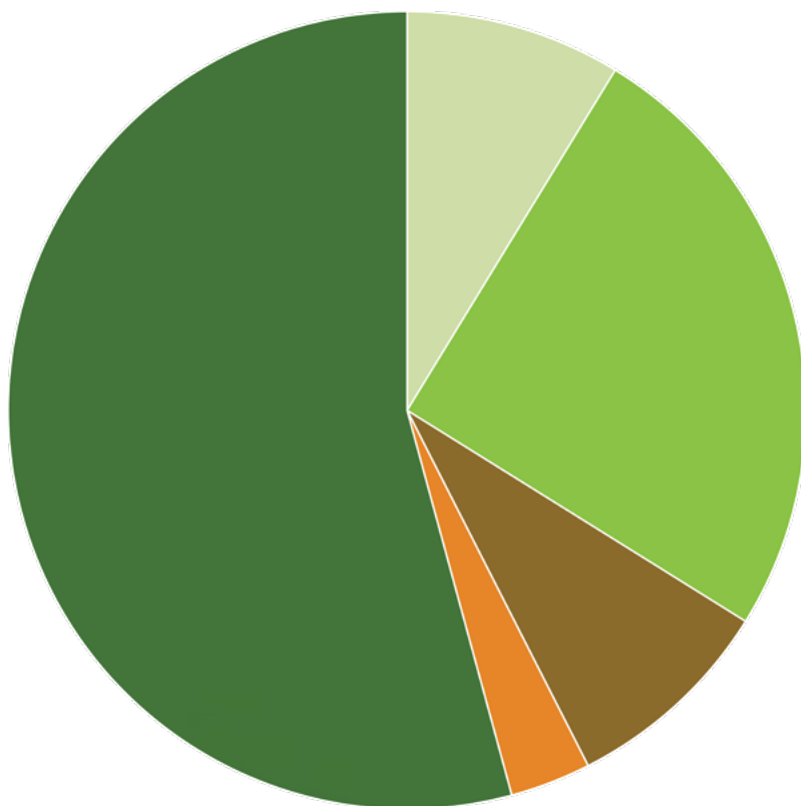
Sales for soy-based renewable fuels are increasing due to the work of the Clean Fuels Alliance America. The World Initiative for Soy in Human Health has increased exports to Africa, Asia and Latin America. Support for these activities has expanded soybean sales and positively impacts the price of soybeans.

Delaware soybean farmers participated in the American Soybean Association's Action Partnership, a collaborative forum of grower and industry leaders to discuss local and regional opportunities and challenges to promote the growth and profitability of the soy industry.

## FY23

### Checkoff Funds

During the fiscal year of October 1, 2022 to September 30, 2023, the Delaware Soybean Board collected \$459,118.47 in assessments. About one half of these funds were disbursed to the United Soybean Board. The balance is managed by the Delaware Soybean Board and invested in local research, communication, promotion and special projects. Program implementation expenses cover collection, compliance, elevator audits and Board operations. An audited report is available upon request.



- PROJECT IMPLEMENTATION: \$36,983.98
- RESEARCH & PRODUCTION: \$106,371.28
- MARKET BUILDING & CONSUMER EDUCATION: \$36,509.43
- FARMER ENGAGEMENT: \$13,853.60
- UNITED SOYBEAN BOARD: \$229,502.92

## BOARD MEMBERS

CHAIR Cory Atkins, Seaford

VICE CHAIR Tim Rogers, Frankford

TREASURER Fred West, Frankford

*New Castle County*

Mike Clay, Middletown

Robbie Emmerson, Middletown

*Kent County*

Kellie Blessing, Harrington

Brett Coverdale, Harrington

Chad Dempsey, Dover

*Sussex County*

Rick Dickerson, Laurel

Tim Rogers, Frankford

EX OFFICIO Secretary of Agriculture

Michael Scuse

EXECUTIVE DIRECTOR Danielle Bauer Farace

FINANCIAL AND COMPLIANCE COORDINATOR

Sandy Davis

DDA REPRESENTATIVE Ese Jessa

USB REPRESENTATIVE Cory Atkins

USB ALTERNATE Robbie Emerson



## CONTACT US

Delaware Soybean Board

P.O. Box 319

Salisbury, MD 21803

EMAIL [danielle@desoybeans.org](mailto:danielle@desoybeans.org)

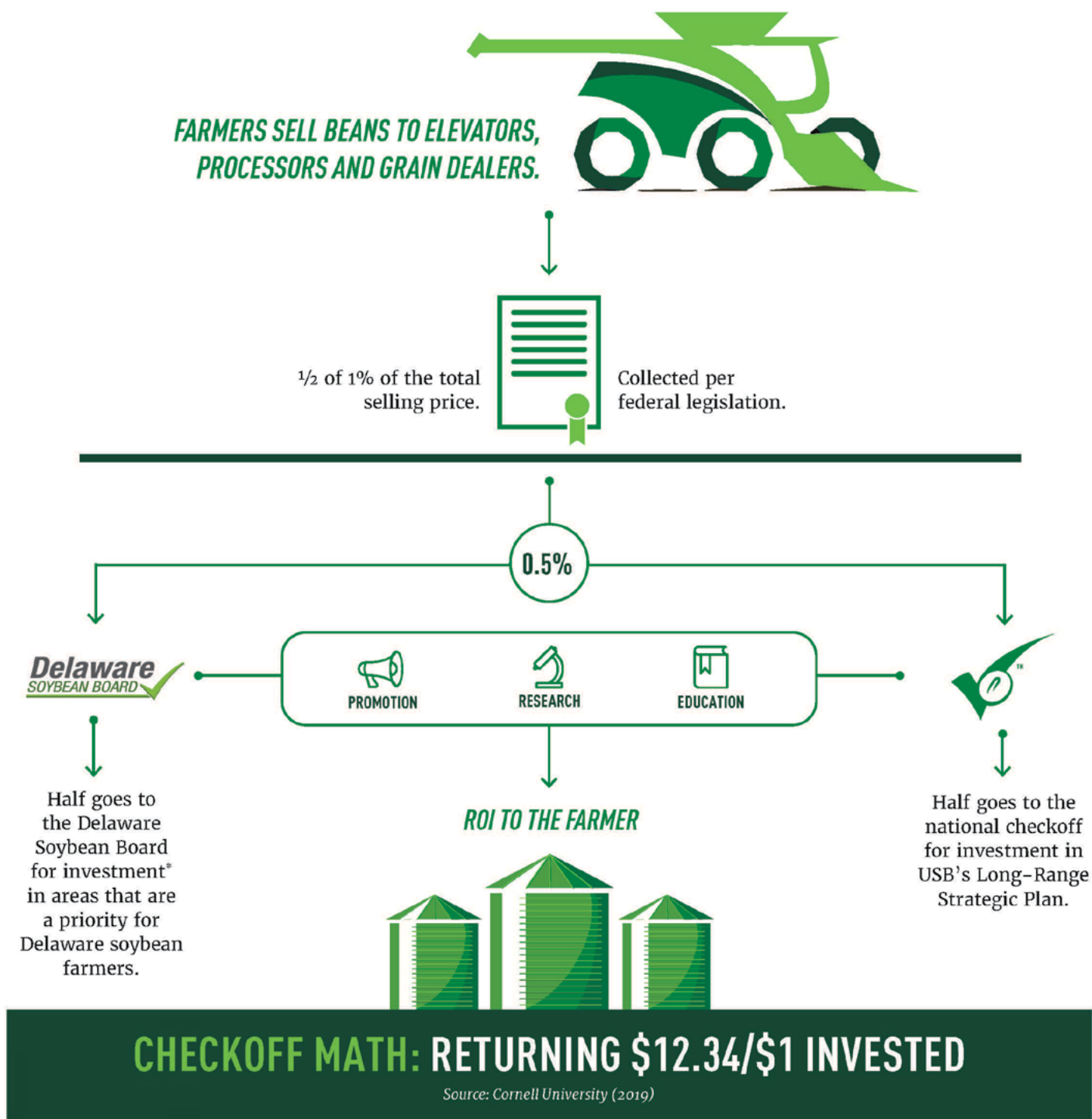
WEBSITE [desoybeans.org](http://desoybeans.org)

FACEBOOK [DelawareSoybeanBoard](https://www.facebook.com/DelawareSoybeanBoard)

INSTAGRAM [delaware\\_soybean\\_board](https://www.instagram.com/delaware_soybean_board)

# HERE'S HOW THE SOY CHECKOFF WORKS

The national soy checkoff was created as part of the 1990 Farm Bill. The federal legislation that created the soy checkoff requires that all soybean farmers pay into the soy checkoff at the first point of purchase. These funds are then used for promotion, research and education at both the state and national level.



\*Led by 9 volunteer soybean farmers, the Delaware Soybean Board invests and leverages soy checkoff dollars to MAXIMIZE PROFIT OPPORTUNITIES for all Delaware Soybean Farmers.

For more information on how your soy checkoff dollars are invested, visit [desoybeans.org](http://desoybeans.org) or [unitedsoybean.org](http://unitedsoybean.org).

©2020 United Soybean Board. [59824-2 9/20]